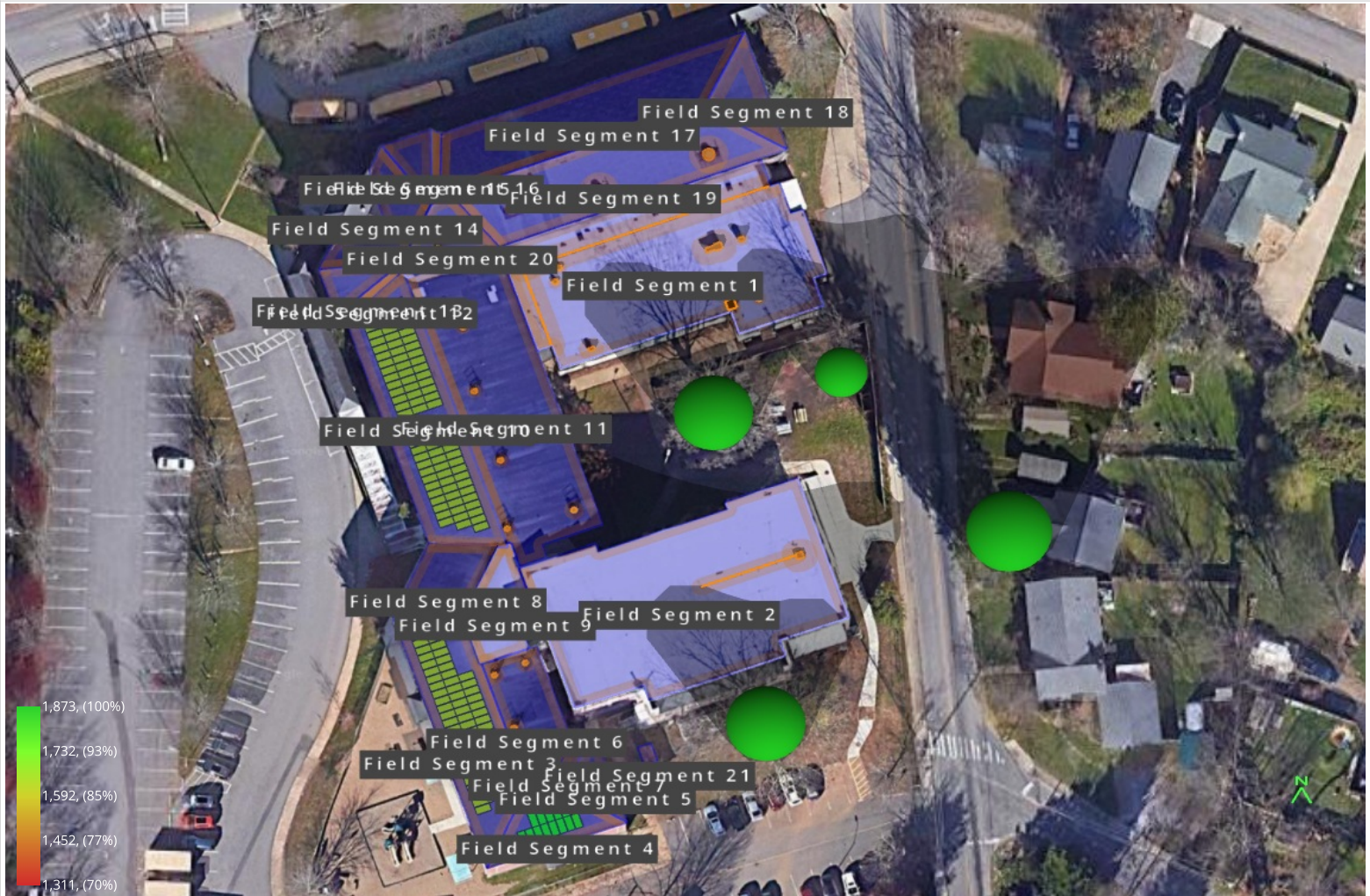


Design 1 Oakley Elementary, 753 Fairview Rd

Shading Heatmap



Shading by Field Segment

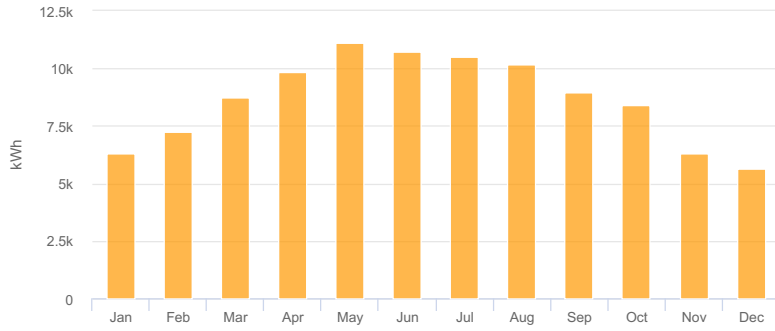
| Description | Tilt | Azimuth | Modules | Nameplate | Shaded Irradiance | AC Energy | TOF ² | Solar Access | Avg TSRF ² |
|--------------------------------|-------|---------|------------|-----------------|---------------------------------|-----------------------|------------------|--------------|-----------------------|
| Field Segment 3 | 24.0° | 250.6° | 64 | 30.7 kWp | 1,659.2kWh/m ² | 40.9 MWh ¹ | 88.6% | 100.0% | 88.6% |
| Field Segment 4 | 24.0° | 160.9° | 13 | 6.24 kWp | 1,877.9kWh/m ² | 9.40 MWh ¹ | 100.0% | 99.5% | 100.3% |
| Field Segment 10 | 24.0° | 250.4° | 84 | 40.3 kWp | 1,659.8kWh/m ² | 53.7 MWh ¹ | 88.7% | 100.0% | 88.6% |
| Totals, weighted by kWp | | | 161 | 77.3 kWp | 1,677.2kWh/m² | 104.0 MWh | 89.6% | 99.9% | 89.5% |

¹ approximate, varies based on inverter performance
² based on location Optimal POA Irradiance of 1,872.9kWh/m² at 33.8° tilt and 181.3° azimuth

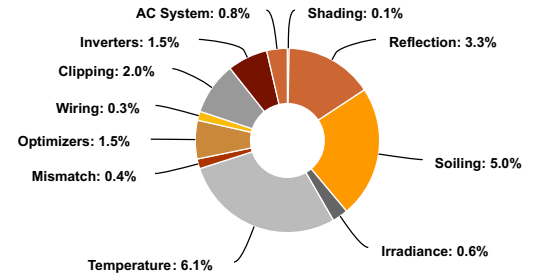
Solar Access by Month

| Description | jan | feb | mar | apr | may | jun | jul | aug | sep | oct | nov | dec |
|--------------------------------------|----------------|----------------|----------------|----------------|-----------------|-----------------|-----------------|-----------------|----------------|----------------|----------------|----------------|
| Field Segment 3 | 100% | 100% | 100% | 100% | 100% | 100% | 100% | 100% | 100% | 100% | 100% | 100% |
| Field Segment 4 | 99% | 100% | 99% | 100% | 100% | 100% | 100% | 100% | 100% | 100% | 99% | 98% |
| Field Segment 10 | 100% | 100% | 100% | 100% | 100% | 100% | 100% | 100% | 100% | 100% | 100% | 100% |
| Solar Access, weighted by kWp | 99.9% | 99.9% | 99.9% | 100.0% | 100.0% | 100.0% | 100.0% | 100.0% | 99.9% | 100.0% | 99.8% | 99.8% |
| AC Power (kWh) | 6,309.9 | 7,270.1 | 8,765.1 | 9,837.6 | 11,094.1 | 10,750.8 | 10,498.8 | 10,190.3 | 8,982.3 | 8,387.3 | 6,324.2 | 5,638.2 |

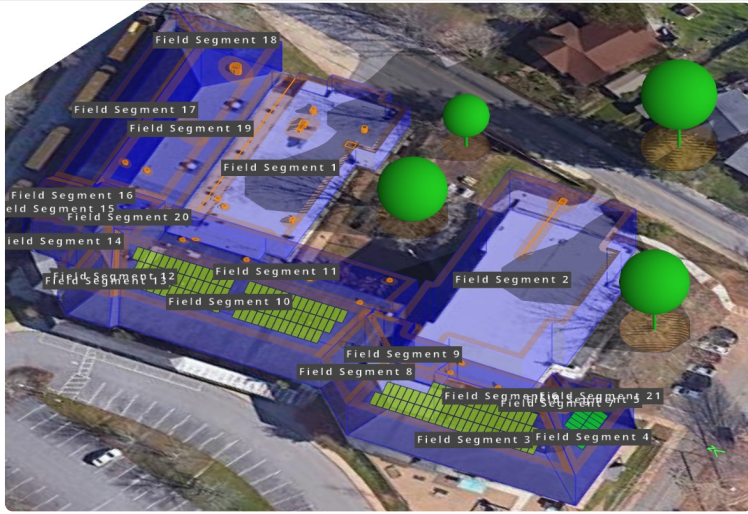
Monthly Production



Sources of System Loss



Southwestern Angle



Southeastern Angle

